

Sweetwater Union High School District Special Board Meeting



Reopening Update

February 26, 2021

Presented by

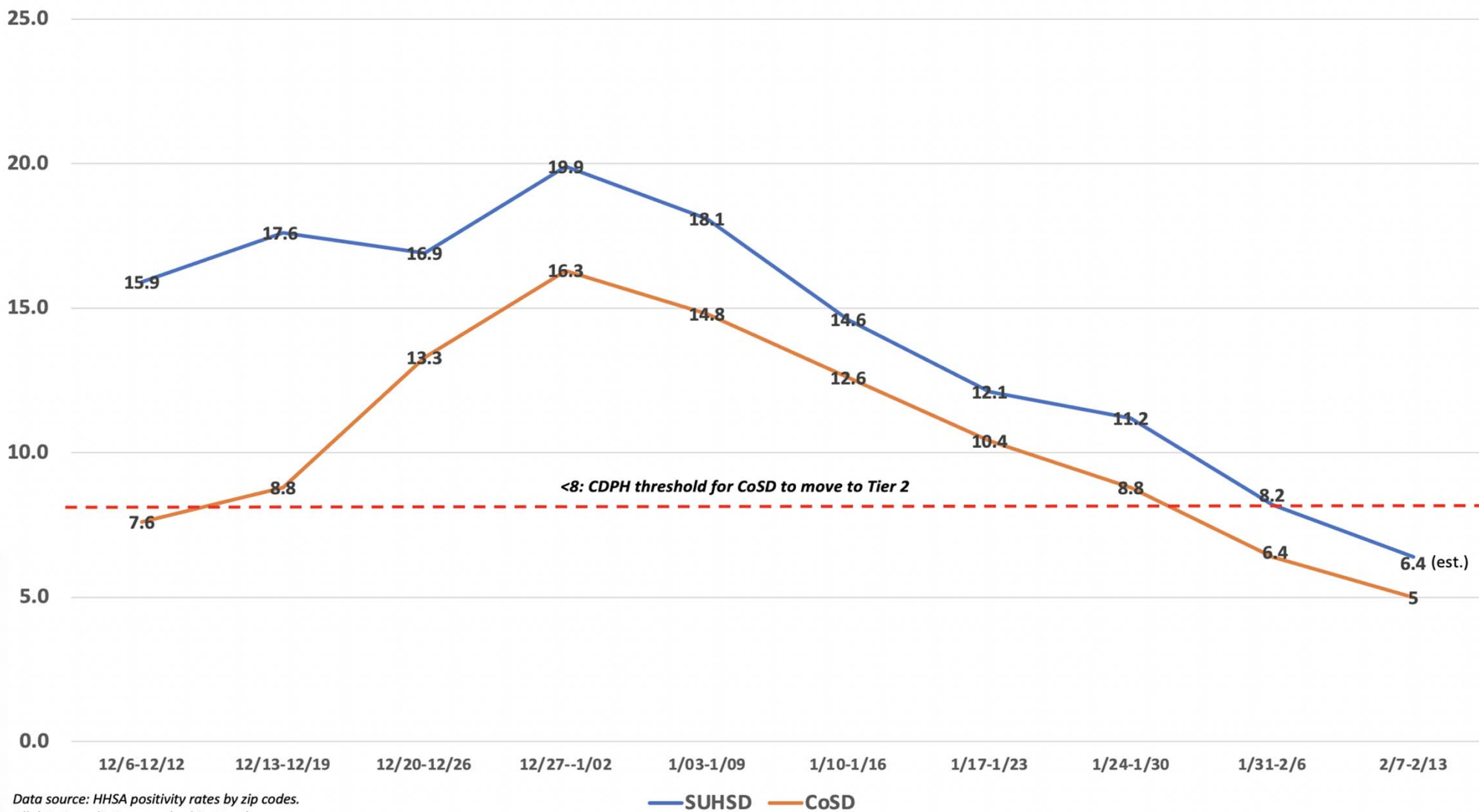
Dr. Moises Aguirre, Dr. Ana Maria Alvarez, Dr. Jennifer Carbuccia,
Mr. John Czajkowski, Dr. Vernon Moore,
Dr. Jenny Salkeld, Ms. Janea Quirk, and Dr. Daniel Winters

Revised Reopening Plan Metrics and Milestones Adopted by Board of Trustees on November 24, 2020

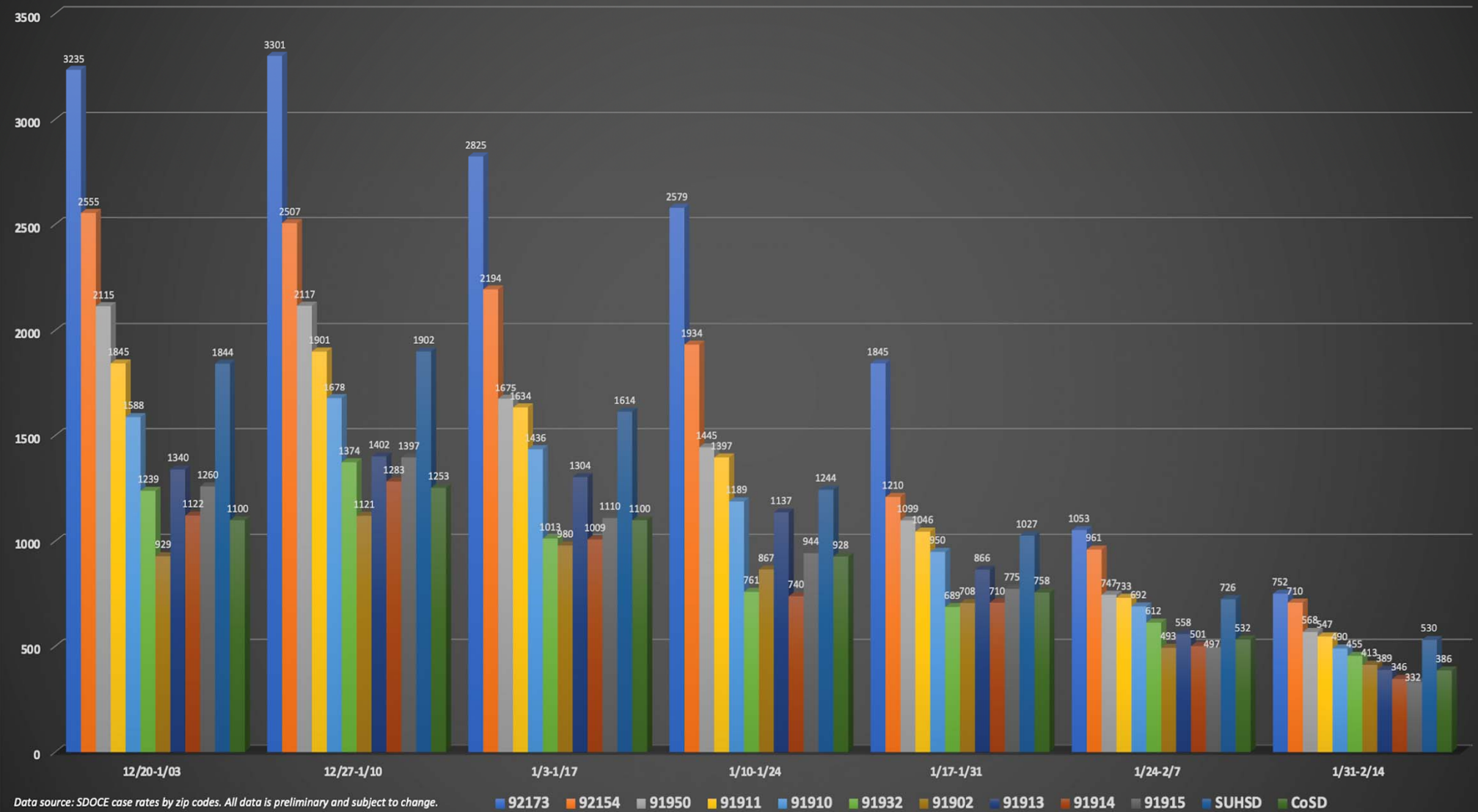


- ▶ Thresholds for progressing to Phase Two (all four criteria must be met)
 - a. County of San Diego in Tier Two or lower.
 - b. 14-day SUHSD Case Rate District average is less than 200 for two consecutive weeks (per CDC).
 - c. SUHSD Testing Positivity District average is less than 8% for two consecutive weeks per (per CDPH).
 - d. **Medical Consultation** -Any final decision to move to the next phase of reopening would be vetted through the District physician and Pediatric Epidemiologist
- ▶ Once the two SUHSD threshold indicators are met and held for two weeks, we would reopen two weeks later. Transportation services may take more time to set up.

SUHSD and CoSD Positivity Rates



SUHSD 14-day Case Rate by Zip Code



Teaching and Learning



Focus on quality first instruction in Distance Learning and the systems/PD/support to achieve it.

Instruction

Support Systems

Professional Development

Standards Aligned Instruction- Identified Essential Standards and Scope and Sequence

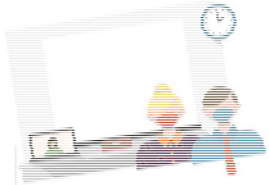
Staffing to Support Small Group Cohorts

VAPA, Afterschool Programs, and Athletics

Counseling Program and Progress Monitoring

Induction Program

Curriculum and Instruction Team
District and Site Professional Development



Stages

Stages for transition to in-person instruction

- | | |
|-----------|---|
| Stage I | All instruction will be offered in a distance-learning model based on local health indicators. |
| Stage II | Based on local health indicators, up to 10% of students could return to in-person instruction. Students would be selected based on the greatest need. |
| Stage III | Based on local health indicators, up to 20% of students could return to in-person instruction. Students would attend one day a week in person and 4 days with distance learning. This would meet the limit of 9 students per class based on social distancing guidelines. |
| Stage IV | Based on local health indicators, up to 50% of students would return on a given day. Students would attend in person instruction twice a week, the other three days would be offered in a distance learning model. |
| Stage V | Based on local health indicators, it is safe for all (100%) students to return to school on a daily basis. |

Support for Students in Distance Learning



Small Group In-Person Cohorts



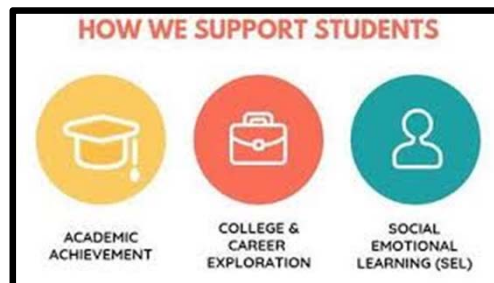
Small Group Virtual Tutoring



In-Person & Virtual Saturday Academies



Virtual Tutoring



Counseling Supports-
Virtual and Small Group
In-Person



Academic, Athletics, and
Enrichment Courses

Middle Schools



High Schools



Distribution of First Semester Grades

School Type	A	B	C	D	F	NCP	*Other
Middle School	23,812	11,278	8,920	7,339	3,891	4,785	597
High School	69,793	29,184	21,740	12,949	8,561	10,290	830

*Other is a combination of Inc, NC, and E grades

Stage II

Up to Ten Percent Daily Model

- ▶ Would be available when established metric met
- ▶ Initially, teacher volunteers
- ▶ Small Stable Groups
- ▶ Students selected based on need
- ▶ Schedule: Students selected to participate would attend in-person instruction two days a weeks
 - A schedule: Monday Periods 1, 3, 5 and Tuesday Periods 2, 4, 6
 - B schedule: Wednesday periods 1,3, 5 and Thursdays Periods 2, 4, 6
- ▶ Safety protocols implemented



Health & Safety Implementation

IONIZERS

Improving Fresh Air

THIS ESTABLISHMENT
IS PROTECTED BY

iWave

AIR PURIFIERS

All learning
environments & offices

Personal Protective Equipment - PPE

- Face Shields
- Thermometers & Batteries
- Hand Sanitizer
- Face Coverings
- Gowns
- Gloves (Nitrile & Vinyl)
- Alcohol Wipes
- Disinfectant/Sanitizing Supplies



Health & Safety Practices

HANDWASH STATIONS



X-1 GENERATOR & BACKPACK "FOGGERS"

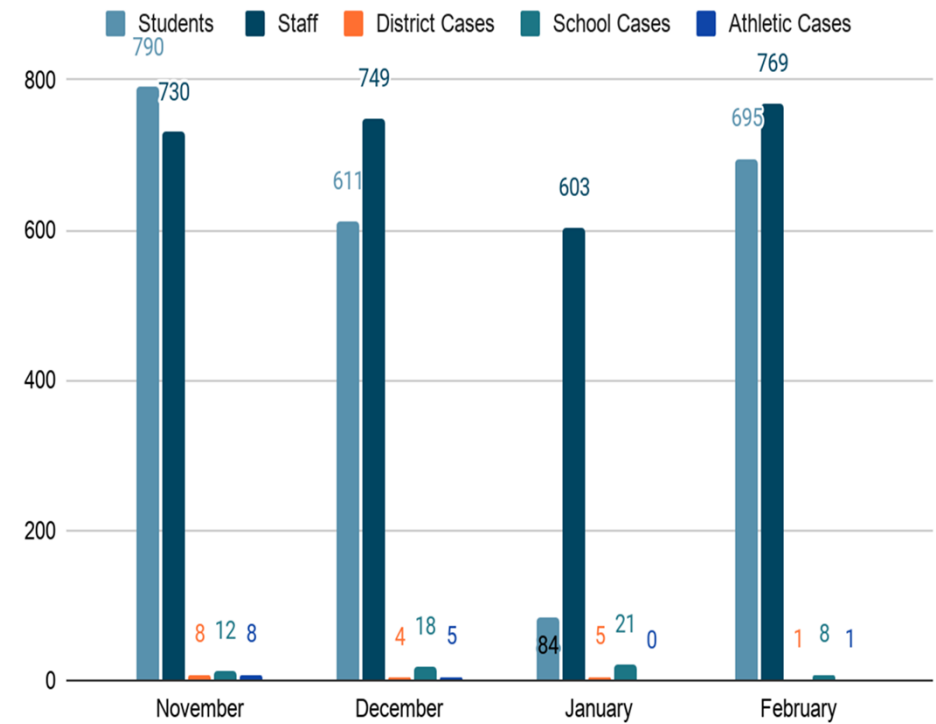
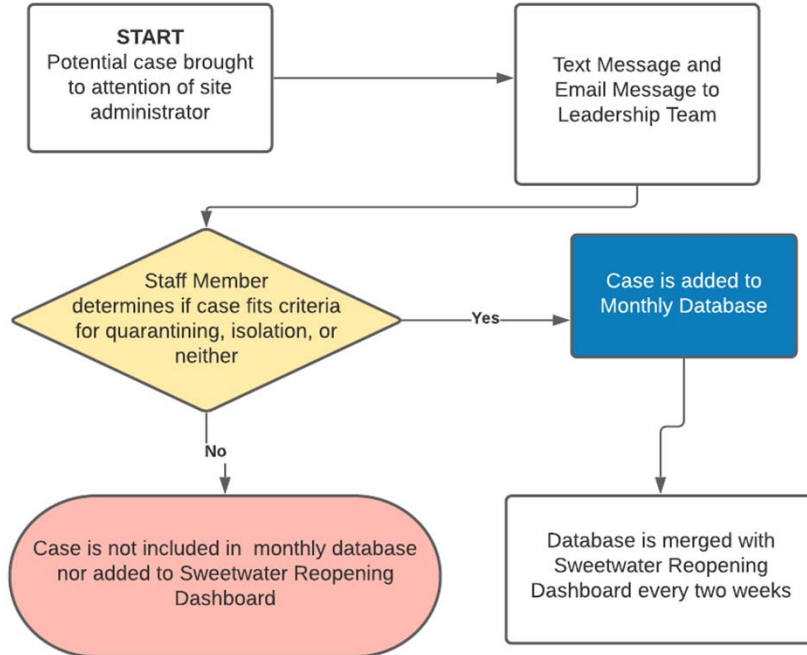


Four (4) per campus

SIGNAGE, SOCIAL DISTANCE, BARRIERS, TENTS

Reopening Dashboard

COVID Exposure, COVID Symptoms, COVID 19+



Athletics



Special Board Meeting

- Current Sports
 - Cross Country
 - Swim and Dive
 - Girls Golf
 - Boys Golf
 - Co-Ed Tennis
 - Track and Field
- California Department of Public Health Guidance for Outdoor Sports
 - Field Hockey
 - Co-Ed Football*
 - Co-Ed Roller Hockey
 - Softball
 - Baseball
 - Lacrosse
 - Water Polo*
 - Soccer
 - Competitive Cheer
- Indoor Sports Waiting on Further Guidance
 - Basketball
 - Volleyball
 - Gymnastics
 - Wrestling
- Probationary Grading Period
 - BP 6145 - Extracurricular and Co-curricular Activities

CARES Act Learning Loss Mitigation

•Governor's Emergency Education Relief Fund

- Resource 3215 – District Allocation of \$2,432,999
- Funding Expires 9/30/2022

•Coronavirus Relief Fund

- Resource 3220 – District Allocation of \$26,512,216
- Funding Expires 12/31/2021 (initially 12/30/2020)

•State General Fund

- Resource 7420 – District Allocation of \$3,375,622
- Funding Expires 6/30/2021

Elementary and Secondary School and Emergency Relief Fund

- Resource 3210 – District Allocation of \$8,261,382
- Funding Expires 9/30/2022

Elementary and Secondary School and Emergency Relief Fund II

- Resource 3212 – District Allocation of \$34,332,958
- Funding Expires 9/30/2023

Funding requires quarterly reports to the California Department of Education and the adoption of the Learning Continuity Plan (LCP).





Actions and Services Provided by CARES Act Funds

- ▶ Small group supports - started as soon as 11/5/2020
- ▶ Hired temporary teachers at each school site to provide all day small group supports
- ▶ Virtual Tutoring - after school and Saturdays
- ▶ Supplies and materials for Distance Learning and In-Person Instruction
- ▶ Personal Protective Equipment
- ▶ Portion of counselors salaries
- ▶ Teachers on Special Assignment
- ▶ Counselors on Special Assignment
- ▶ Community Resource Facilitators
- ▶ Sanitization and other cleaning equipment
- ▶ Counseling small group supports -commence soon
- ▶ Mental Health Resources
- ▶ Computers and hotspot purchased
- ▶ Professional Development



Advocacy

Vaccine Sites

- ▶ Working with County of San Diego to allow Nurses to Vaccinate South County Residents
- ▶ Mar Vista High/City of IB vaccine site
- ▶ SUHI/City of National City PPE Site; working on possible vaccine site
- ▶ SDCOE working with VEBA to provide vaccines to educators

Advocacy

- ▶ Working jointly with Supervisor Vargas, Mayors Salas, Dedina, Sotelo Solis, and Councilmember Moreno to advocate for the importance of vaccinating educators to prepare reopening of school
- ▶ Working with County Superintendents and school board to advocate to safe reopening standards and resources to support serving students



COVID-19 Testing

Teachers and Staff ▼

- Mandatory
- Every two months*
- Positivity rate monitored
- Developing contract with San Diego State University's Department of Public Health through a National Institute of Health grant

Students ▼

- Voluntary for 10% student group
- Mandatory for extra curricular participation
- Every two weeks
- Positivity rate monitored

NOTE: Testing would consist of antigen (rapid test - 15/20 minute result) and PCR (24-48 hour turnaround).

Recommendations

- ▶ Continue in Distance learning through Spring Break (March 19th).
- ▶ Add another check-in point on March 18 - to announce to students and families the progression to State 2-10%.
- ▶ Continue to safely reopen athletics based on recent developments, including updates to guidance by the California Department of Public Health (CDPH) and impact of recent legal cases.
- ▶ Extend the athletic probationary period for all students through April 23, 2021, allowing students to meet the 2.0 grade point average requirement.
- ▶ **Target Move to Stage 2: Monday, April 12th**
 - ❑ Continue to monitor case rates and positivity rates.
 - ❑ Transition to Stage 2 in-person teaching and learning would be voluntary for both teachers and students.
 - ❑ As vaccines begin to be available to educators beginning on Saturday, February 27th, likelihood of more educators returning to work site, per the MOU.



